



RECP #: 752750
 RECORDED 5/8/2019 AT 1:15 PM BK# 2620 PG# 1792
 Debra K. Lee, CLERK OF LARAMIE COUNTY, WY PAGE 1 OF 1

STATE OF WYOMING CORNER RECORD

(In compliance with the CORNER PERPETUATION AND FILING ACT, Wyoming Statutes, 1997 Section 33-29-140, et. seq., and the Rules and Regulations of the Board of Registrations for Professional Engineers and Professional Land Surveyors)

NORTHWEST CORNER SECTION 10, T. 18 N., R. 61 W., 6TH P.M., LARAMIE COUNTY, WYOMING

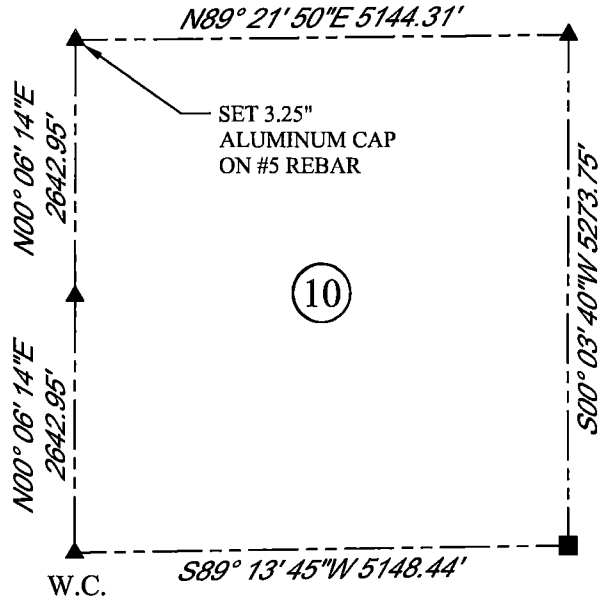
GLO: A SANDSTONE 17X9X6 SET 12 IN DEEP MARKED 5 NOTCHES ON S EDGE AND 3 NOTCHES ON E. SIDE FOR COR. TO SEC. 3, 4, 9, 10.

FOUND: NOTHING

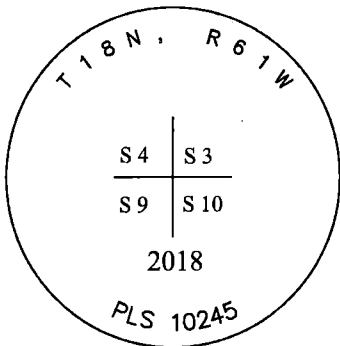
SET: SET A 3.25" ALUMINUM CAP ON #5 REBAR, 19" BELOW SURFACE MARKED AS SHOWN. POSITION RE-ESTABLISHED BY DOUBLE PROPORTION.



SCALE: NONE
 NORTH DETERMINED BY
 G.P.S OBSERVATIONS



SET 3.25" ALUMINUM CAP, STAMPED AS SHOWN



DATE OF FIELD WORK: 10/09/2018 OFFICE REFERENCE: MERIDEN

LEGEND:

- FOUND BLM CAP
- FOUND USFS CAP
- FOUND STONE
- ◆ FOUND PRIVATE MONUMENT
- ◇ CALCULATED POSITION
- ▲ SET MONUMENT (LS10245)
- SECTION LINE

CROSS INDEX DIAGRAM

1	2	3	4	5	6	7	8	9	10	11	12	13	14	15	16	17	18	19	20	21	22	23	24	25		
A																									B	
B																									C	
C	6		5		4		3		2		1														D	
D																										E
E																										F
F																										G
G	7		8		9		10		11		12														H	
H																										I
I																										J
J																										K
K																										L
L	18		17		16		15		14		13															M
M																										N
N																										O
O																										P
P	19		20		21		22		23		24															Q
Q																										R
R																										S
S																										T
T	30		29		28		27		26		25															U
U																										V
V																										W
W																										X
X	31		32		33		34		35		36															Y
Y																										Z
Z	1	2	3	4	5	6	7	8	9	10	11	12	13	14	15	16	17	18	19	20	21	22	23	24	25	

WOOD
 2615 AVIATION DRIVE
 SHERIDAN, WY 82801
 PH: 307-675-6400

THIS CORNER RECORD WAS
 PREPARED BY ME OR UNDER
 MY DIRECTION AND
 SUPERVISION,
 SEAL AND SIGNATURE

wood.

